

# HOW WILL NJ4S WORK FOR YOU?



## GOALS

- Create a *localized* network of support for all schools
- Recognize the whole family
- Provide a standard set of *supports and service*
- Involve *communities* in design and implementation
- Intentionally *integrate* with existing community-based services and supports

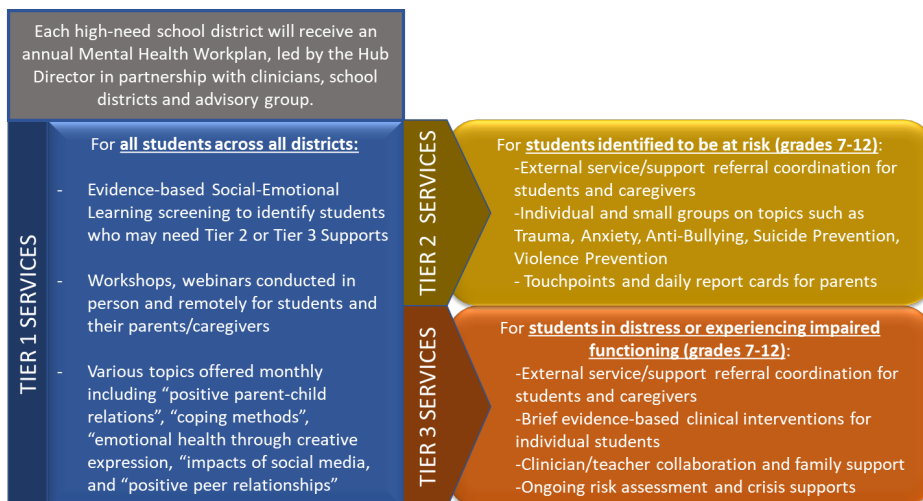
## HUBS

### WHAT IS A HUB?

- The administrators and connectors of services that will deliver prevention programs and mental health services as well as consultation services in school and other community-based locations
- Hubs will employ key staff, including a hub director, assistant director, support staff, prevention specialists, and mental health counselors
- Hubs will provide universal resources and targeted support aimed at promoting positive mental health, teaching, and strengthening social, emotional, and behavioral skills, and supporting a positive school climate and staff well-being
- Hubs will deliver, manage, or coordinate the delivery of tiered services to specific school communities based on identified needs and eligibility
- Services delivered in schools, community centers, libraries and other trusted locations eliminating need for travel

## PROGRAM DESIGN

### SERVICE PROVISION AND DELIVERY WILL BE ORGANIZED INTO TIERS:



Each NJ4S Hub will have a community advisory group and a branded website that will provide access to resources, referral information, Hub staff contact information, calendar of events and general information. Also, Hub activities will be provided onsite at schools as well as within the community.

Hubs will also coordinate as needed with existing School Based Youth Services programs.